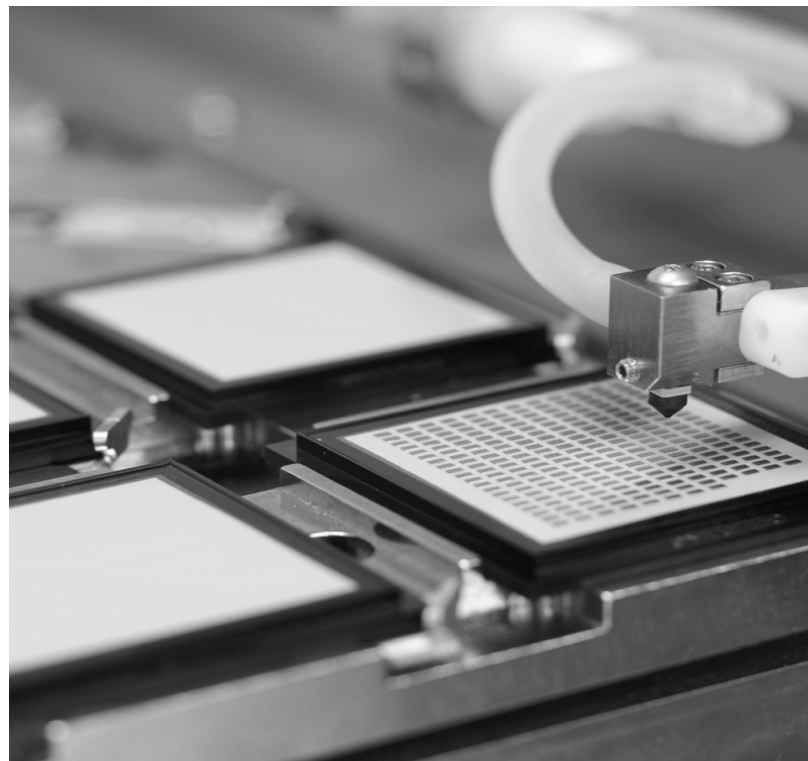


Gel-Pak®

Protecting the World's Valuable Devices

LCS2 User Guide

Assembly & Disassembly of LCS2 and Waffle Pack Chip Tray for the Prevention of Die Migration



A Delphon Company

DELPHON

BEST PRACTICES: ASSEMBLY AND DISASSEMBLY OF LCS2 AND WAFFLE PACK

Gel-Pak

To minimize the risk of die migration, best practice calls for the use of a vacuum fixture to immobilize LCS2/Waffle Pack while placing and removing lid.

****IMPORTANT*** *If vacuum fixture is not available, use extreme caution not to jostle or tilt waffle pack while placing or removing LCS2 lid.*

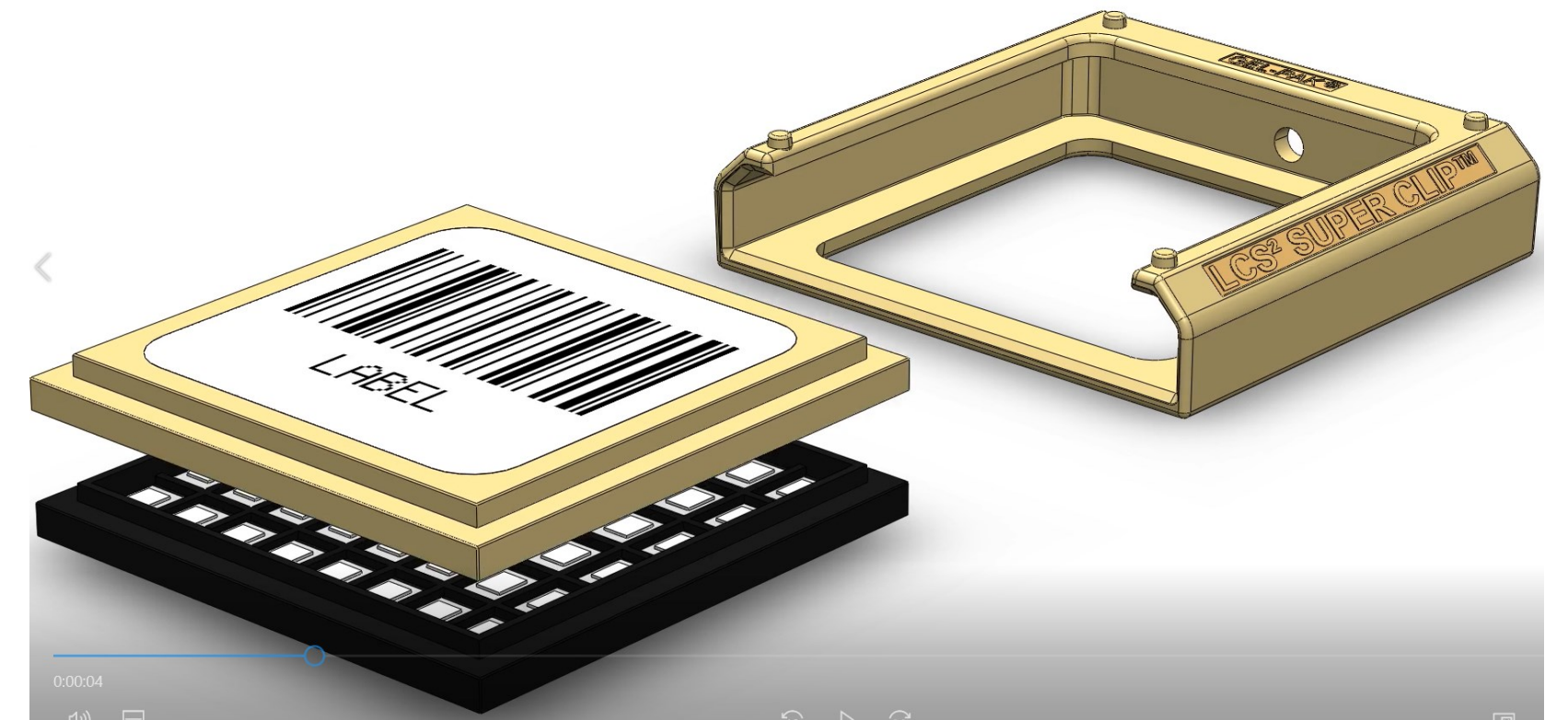
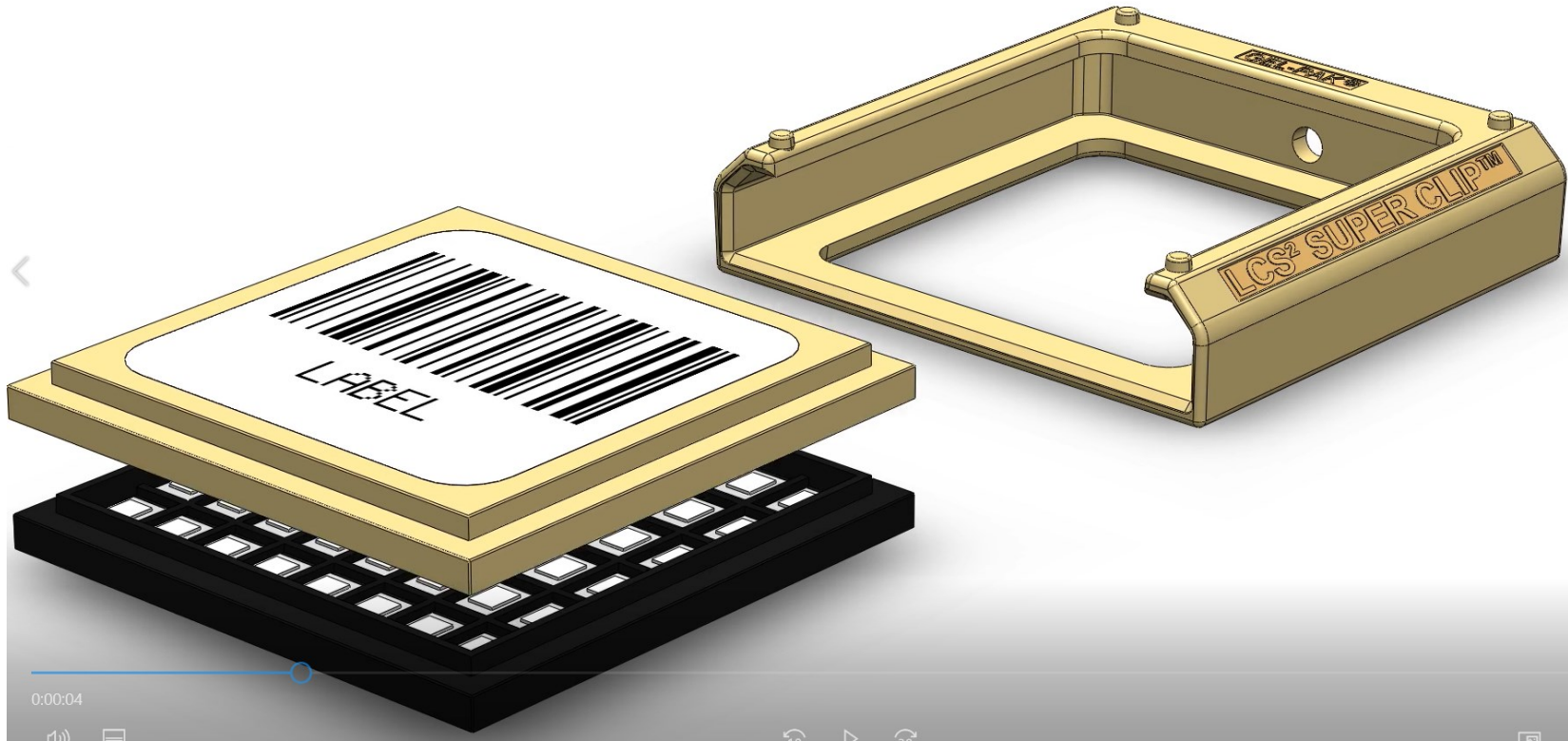


TABLE OF CONTENTS

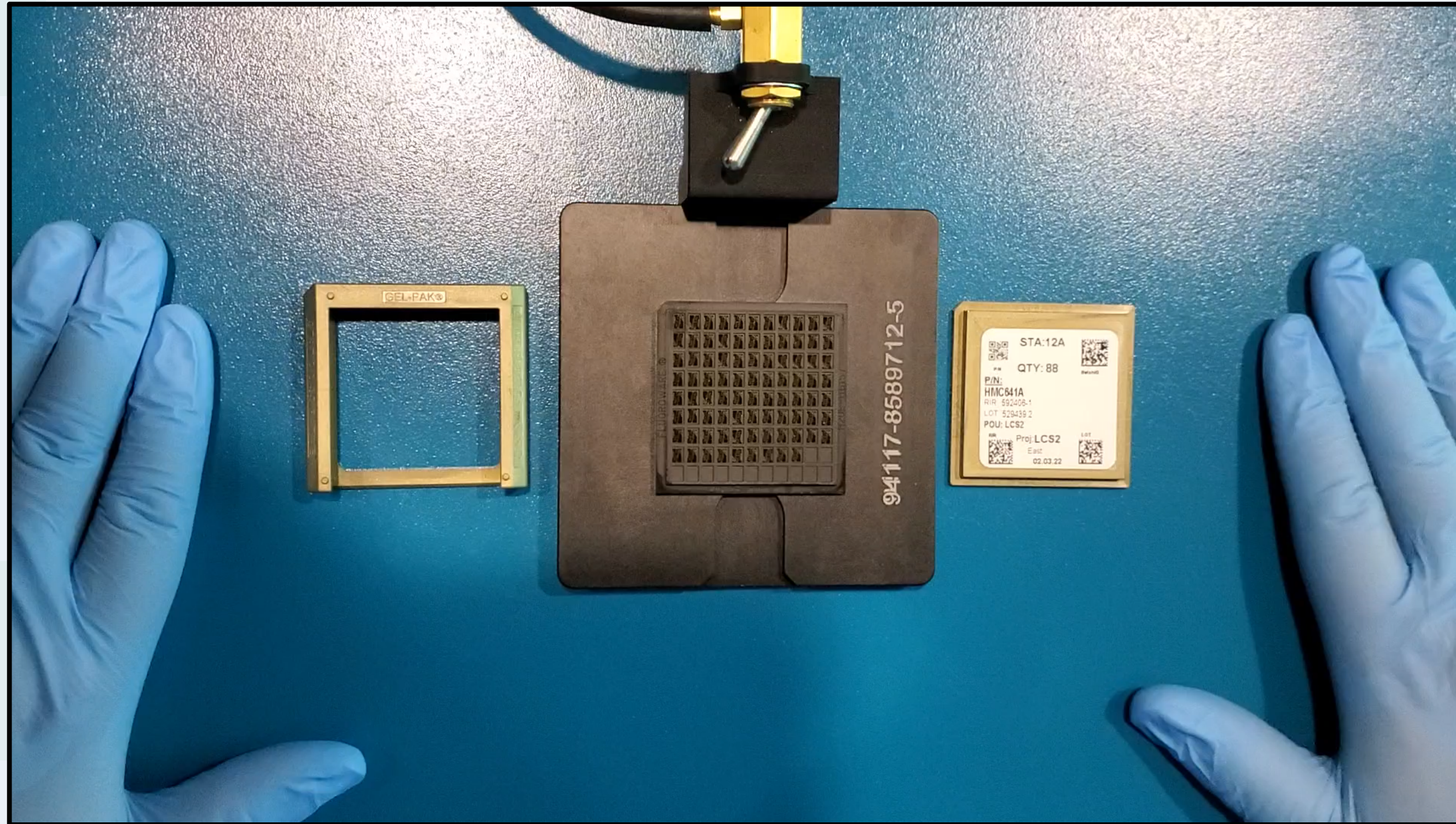


- Assembly (Closing) of LCS2 Video
- Inspecting Components and Preparing LCS2 Lid for Closure
- LCS2 Lid Placement
- Inserting Lid/Tray into LCS2 Clip
- Check your Work
- How to Open LCS2 Video
- Removing Lid/Tray From Clip
- Remove Lid From Tray
- Rotate Lid to Free Components Video



ASSEMBLY (CLOSING) OF LCS2 VIDEO

Gel-Pak

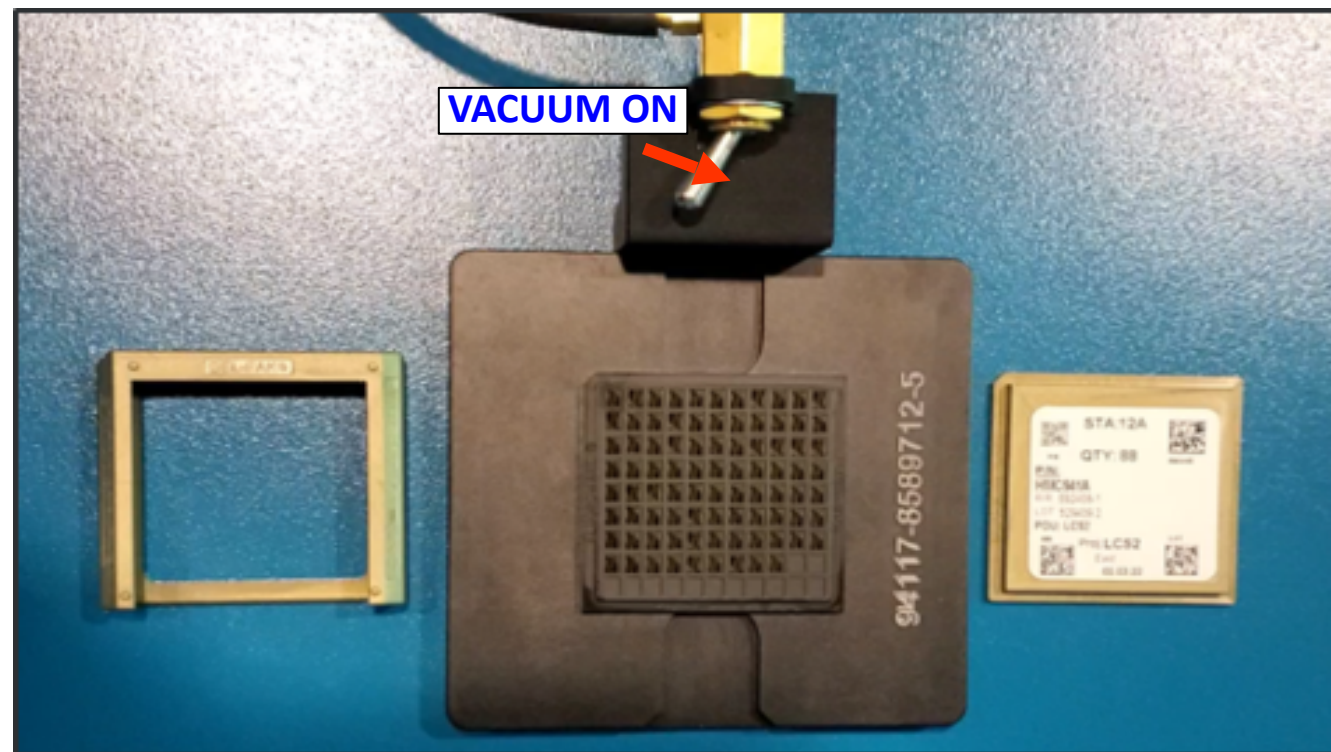


[CLICK ON THE IMAGE TO SEE DEMONSTRATION VIDEO](#)

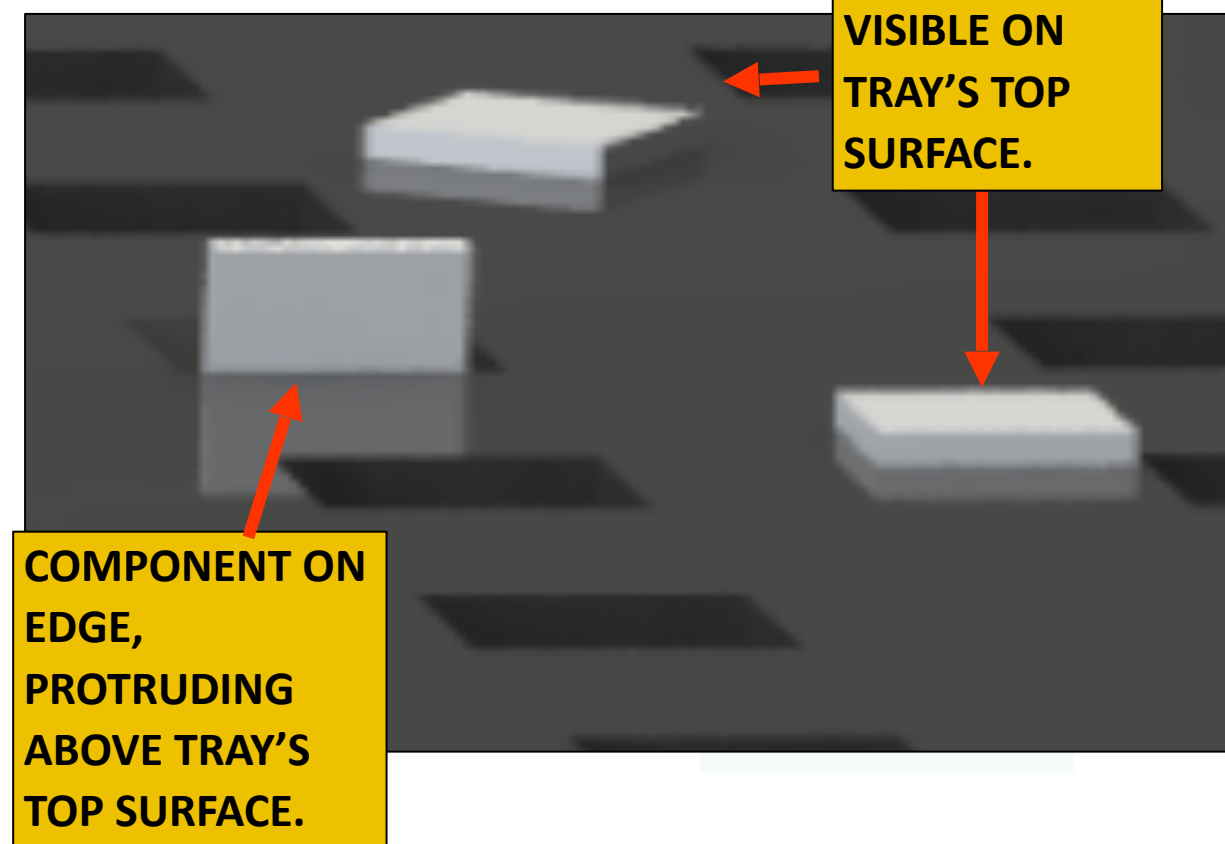
INSPECTING COMPONENTS AND PREPARING LCS2 LID FOR CLOSURE

Gel-Pak

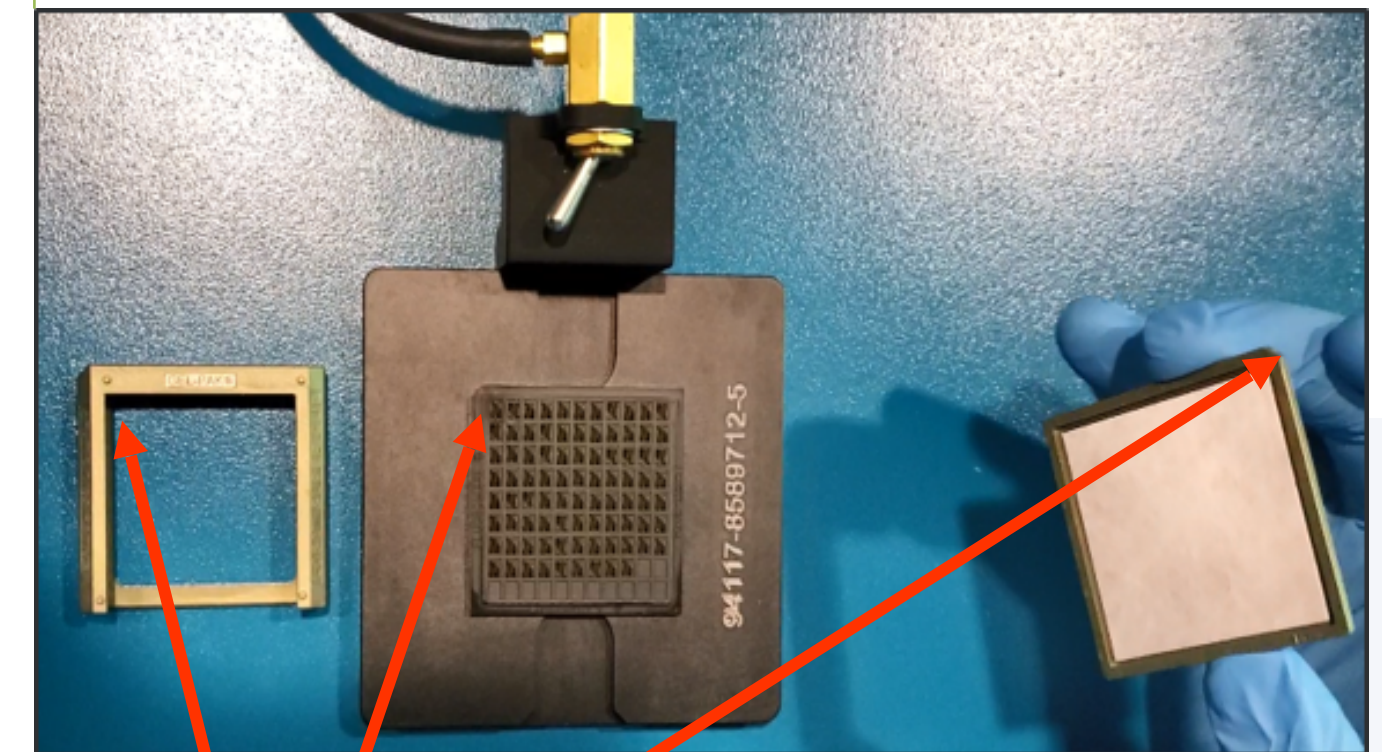
1. Ensure that the waffle tray, just previously loaded with components, is secured by vacuum on the fixture. House vacuum is preferred.



2. Ensure that all components are resting flat in waffle tray pockets and that none are stacked on top of one another. All components are required to be below the tray's top surface. Components which extend onto or above the tray's top surface can act as "tent poles" preventing the lid from sealing all the waffle tray's pockets.



3. Ensure laminated Tyvek on LCS2 lid is visually free of FOD. Place lid with the chamfered corner aligned to the waffle tray's chamfered corner. Avoid contacting the tray's top surface so as avoid touching, moving or damaging components.



FIXTURE P/N 94117-8589712-5

CHAMFERED CORNER

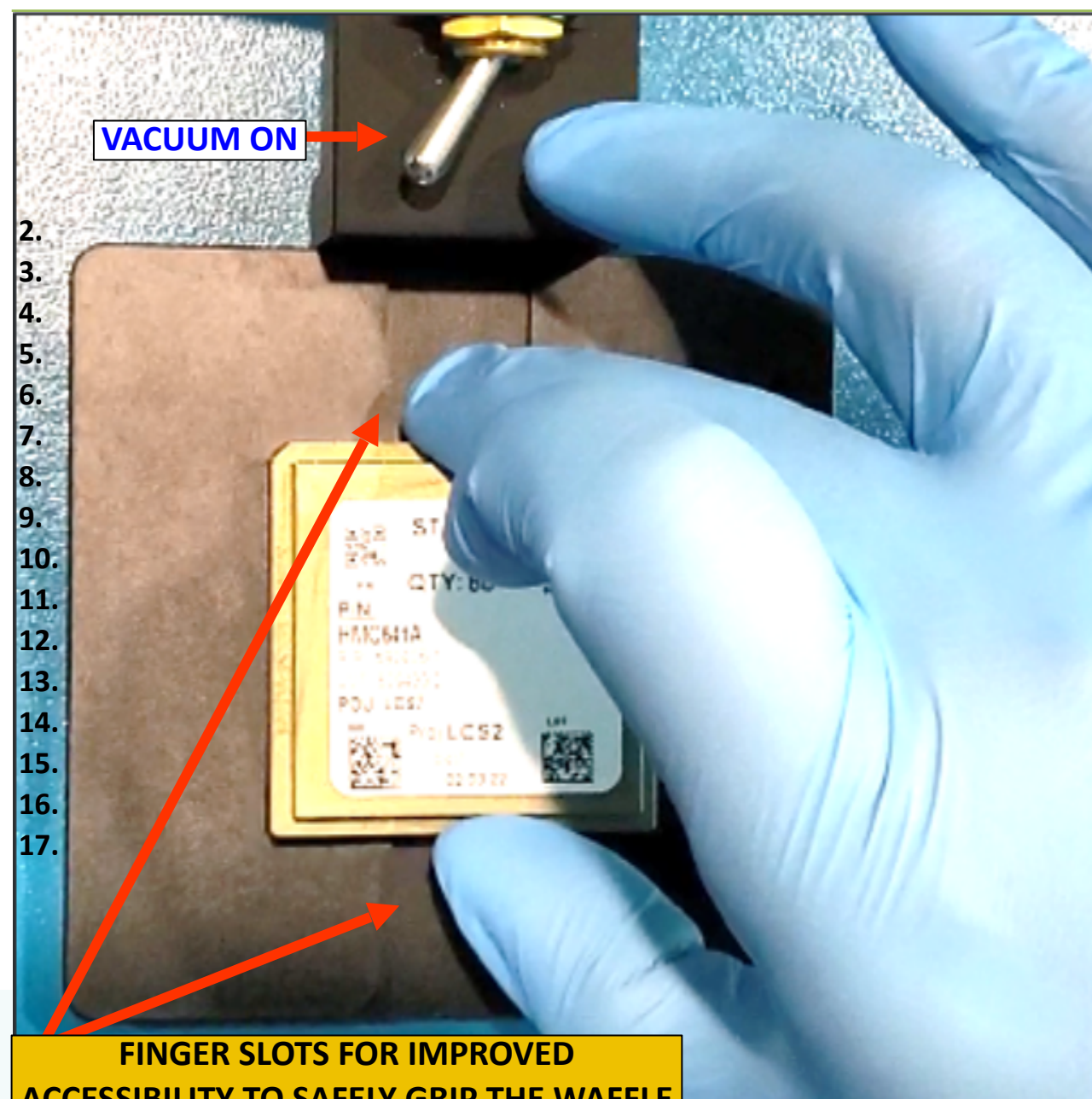
LCS2 LID PLACEMENT

Gel-Pak

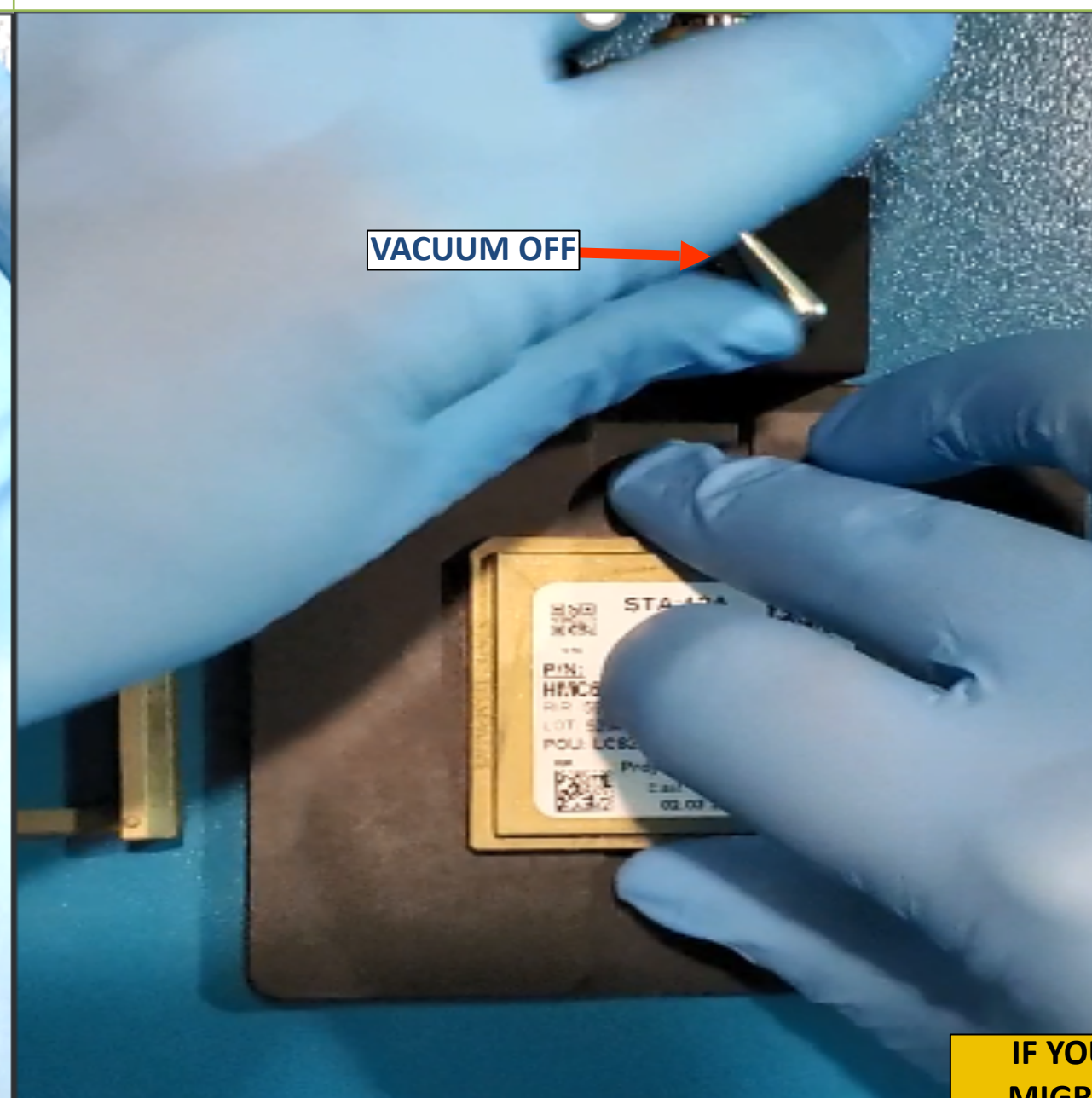
4. With vacuum on, gently place lid onto tray.

5. Turn off vacuum with opposite hand.

6. Grip then lift the lid and tray simultaneously with thumb and middle finger, maintaining slight compression with forefinger onto center of lid.



FINGER SLOTS FOR IMPROVED ACCESSIBILITY TO SAFELY GRIP THE WAFFLE TRAY & LID EDGES TO PREVENT POTENTIAL Die migration



IF YOU SUSPECT PARTS COULD HAVE MIGRATED AT THIS STEP, RESEAT THE WAFFLE PACK AND EXAMINE TRAY CONTENTS.

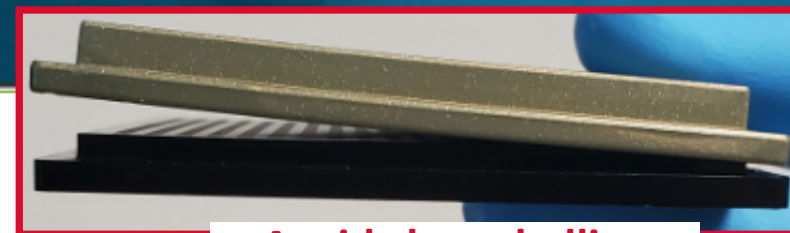
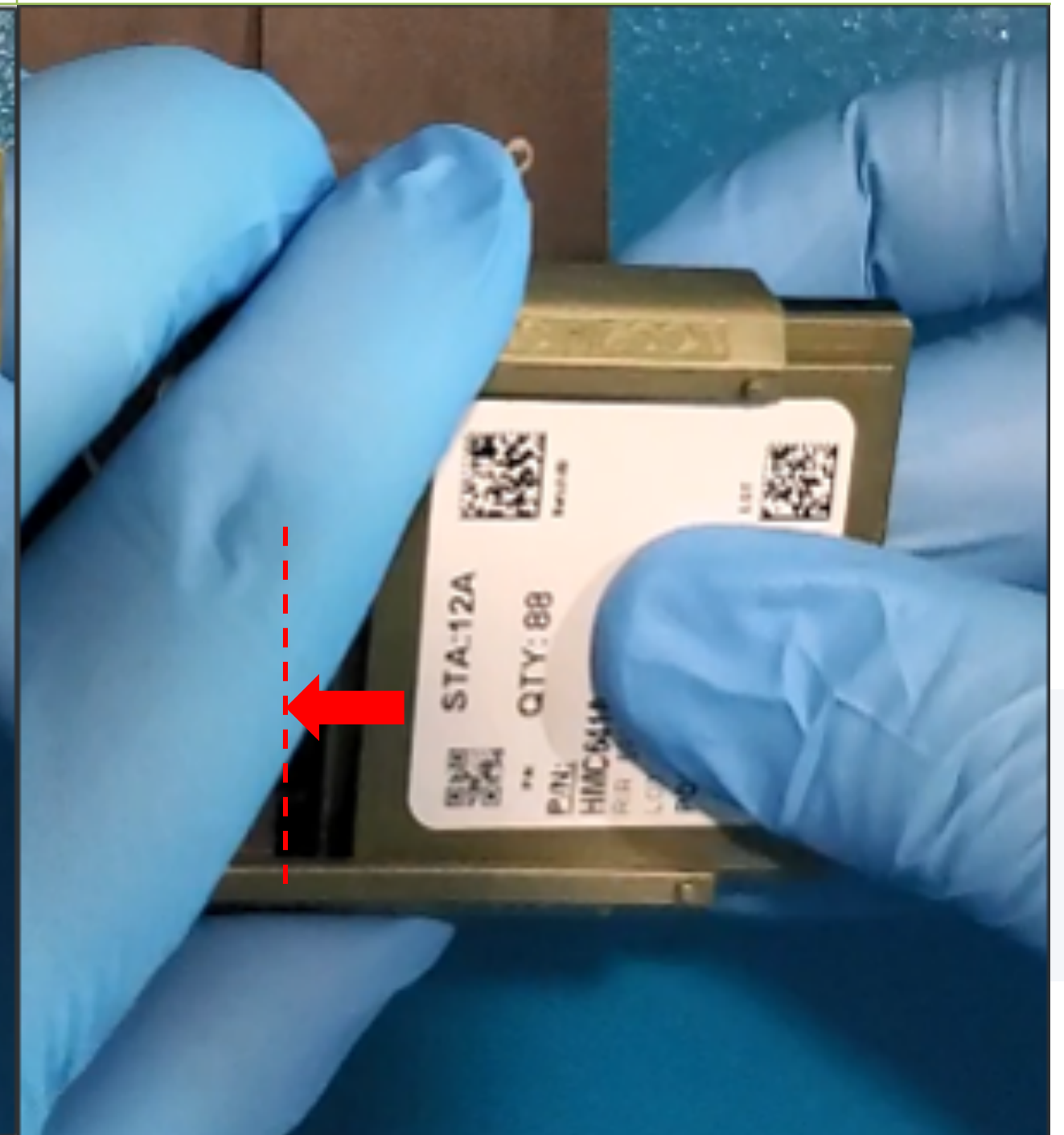
INSERTING LID/TRAY INTO LCS2 CLIP

Gel-Pak

7. Using both hands, rotate lid and waffle tray 90 degrees counter clockwise while maintaining light compression in center of lid.

8. Insert into clip, aligning chamfered corners of lid/tray and clip. Avoid clam-shelling effect.

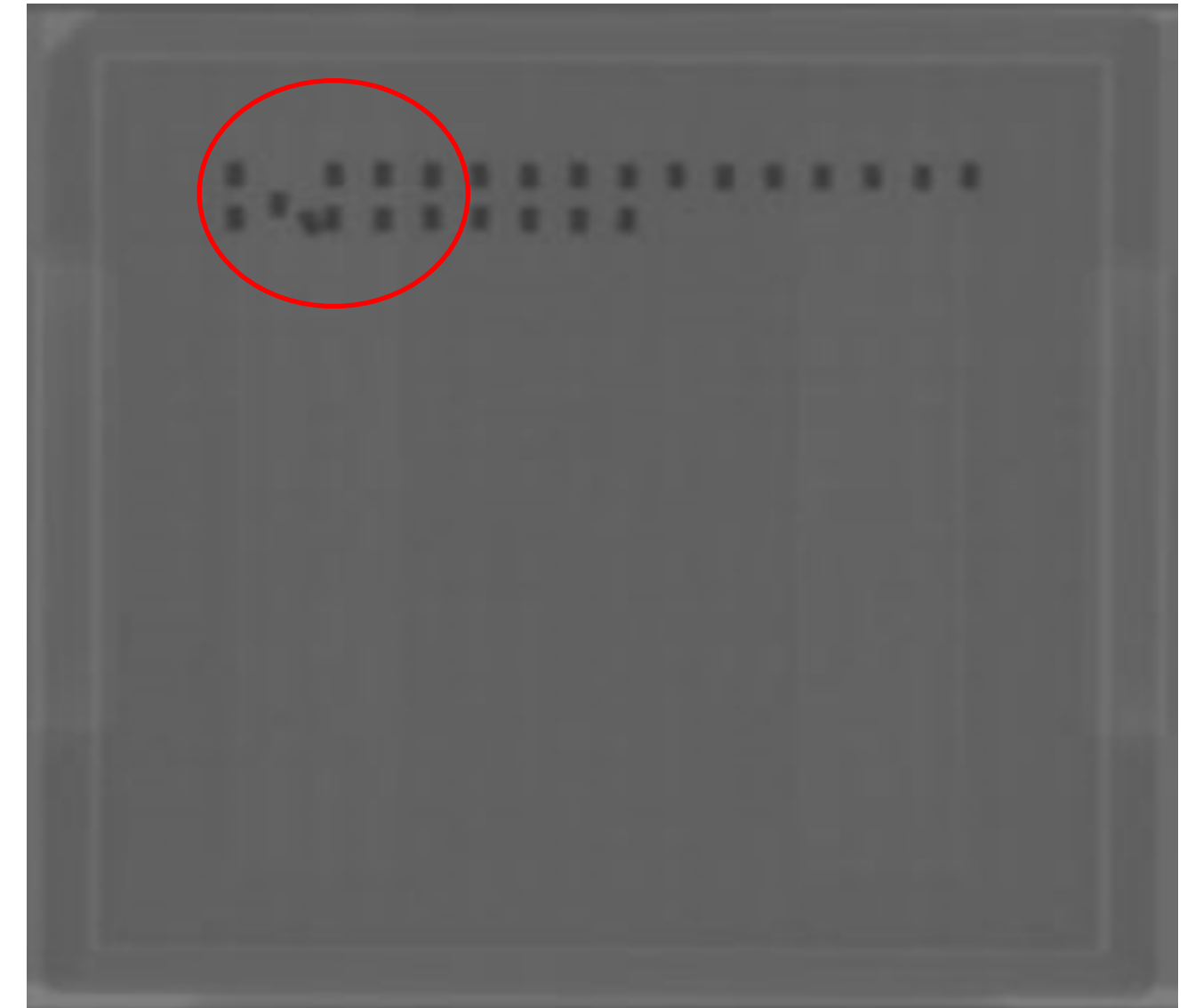
9. Slide fully into the clip.



Avoid clam-shelling

CHECK YOUR WORK

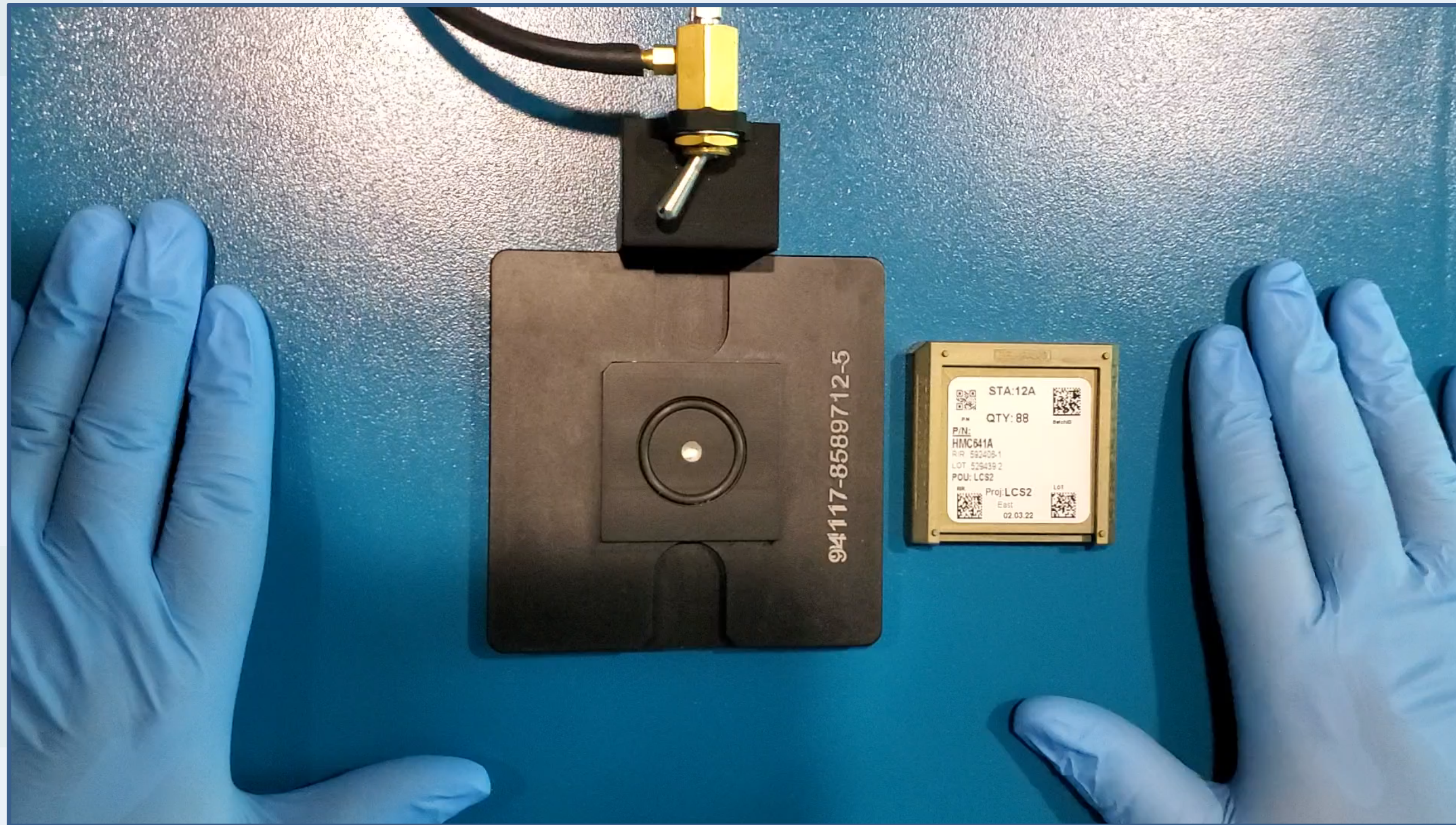
Gel-Pak®



If X-ray is available, check the waffle pack to ensure components did not migrate out of pockets during assembly. If components are out of pocket, open the waffle pack, inspect and re-assemble.

HOW TO OPEN LCS2 VIDEO

Gel-Pak



CLICK ON THE IMAGE TO SEE DEMONSTRATION VIDEO

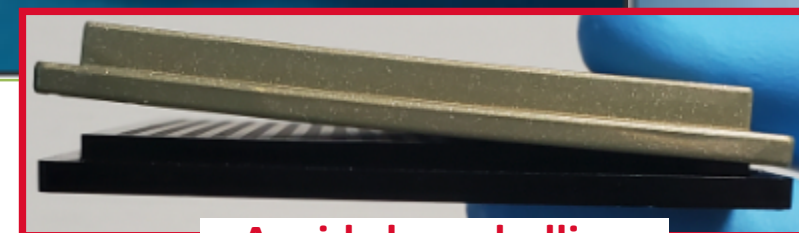
REMOVING LID/TRAY FROM CLIP

Gel-Pak

1. Grip the LCS2™ waffle pack assembly using thumb and index finger.

2. Slide lid and waffle tray out of the clip, maintaining light compression in the center of lid to avoid clam-shelling effect.

3. Using both hands, rotate 90 degrees clockwise while maintaining light compression in center of lid.



Avoid clam-shelling

DELPHON

REMOVING LID FROM TRAY

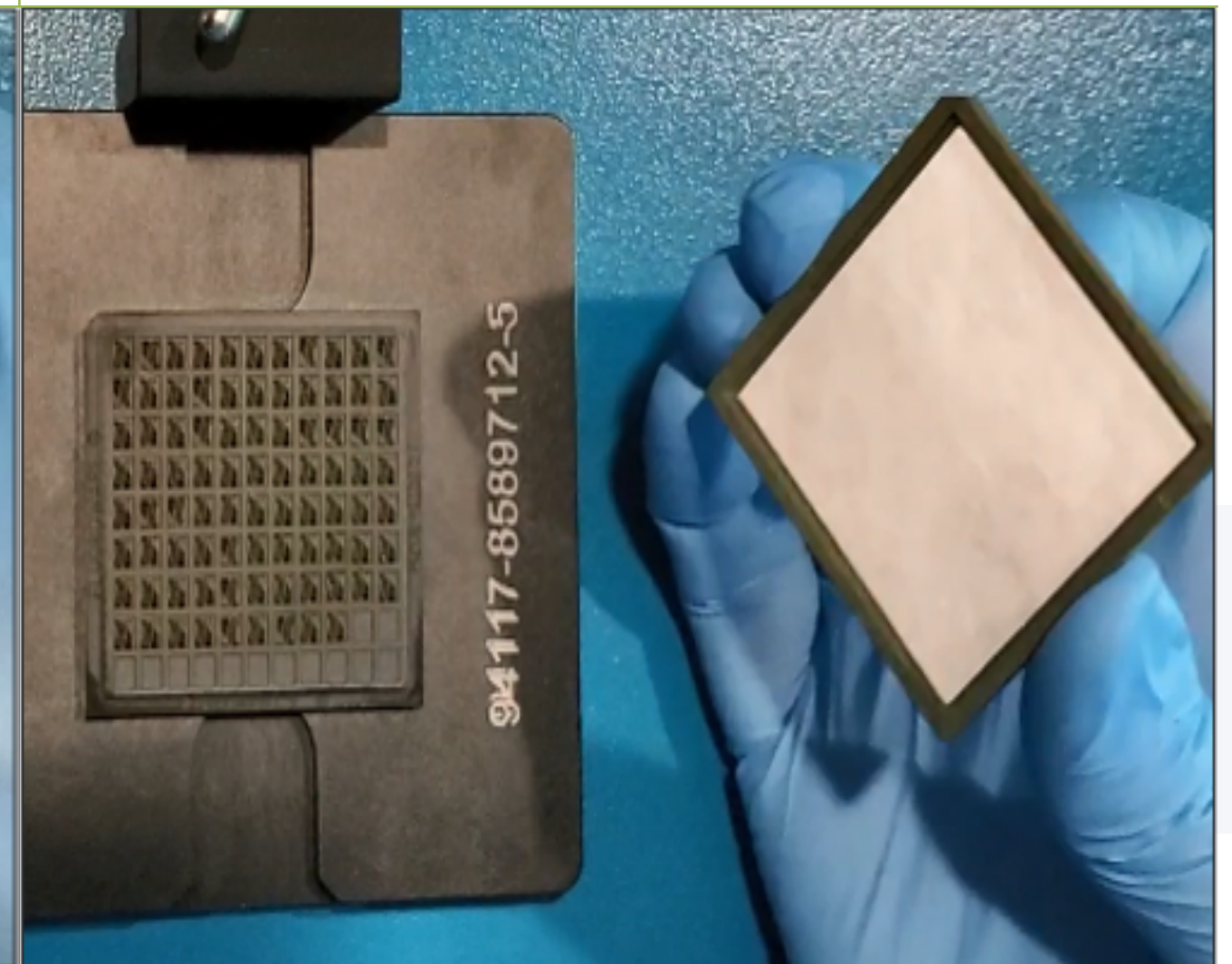
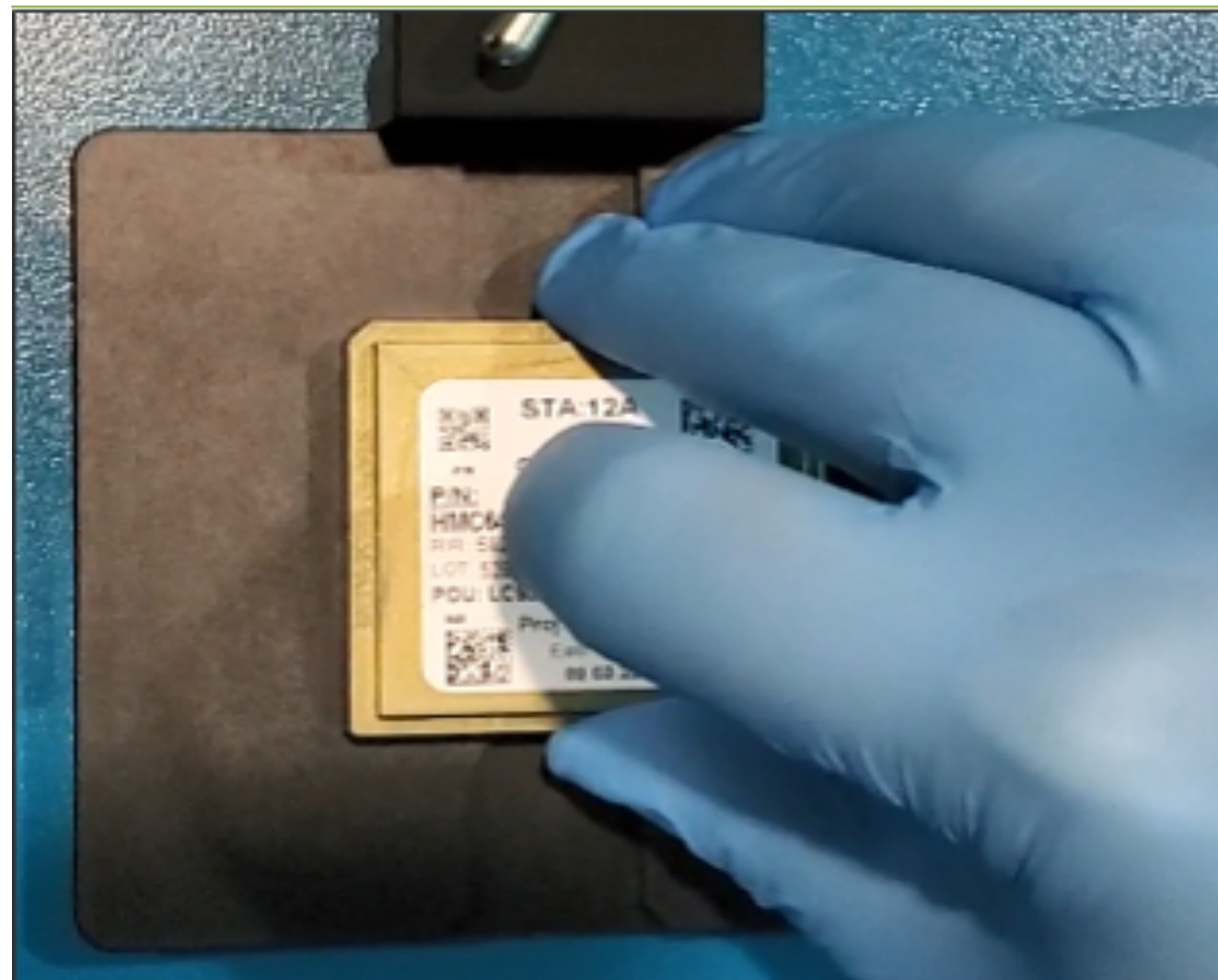
Gel-Pak

4. With fixture vacuum on, gently place the lid and tray onto the vacuum fixture's raised top surface.

Avoid tilting while holding lid and tray, keeping constant gentle pressure on lid with pointer finger.

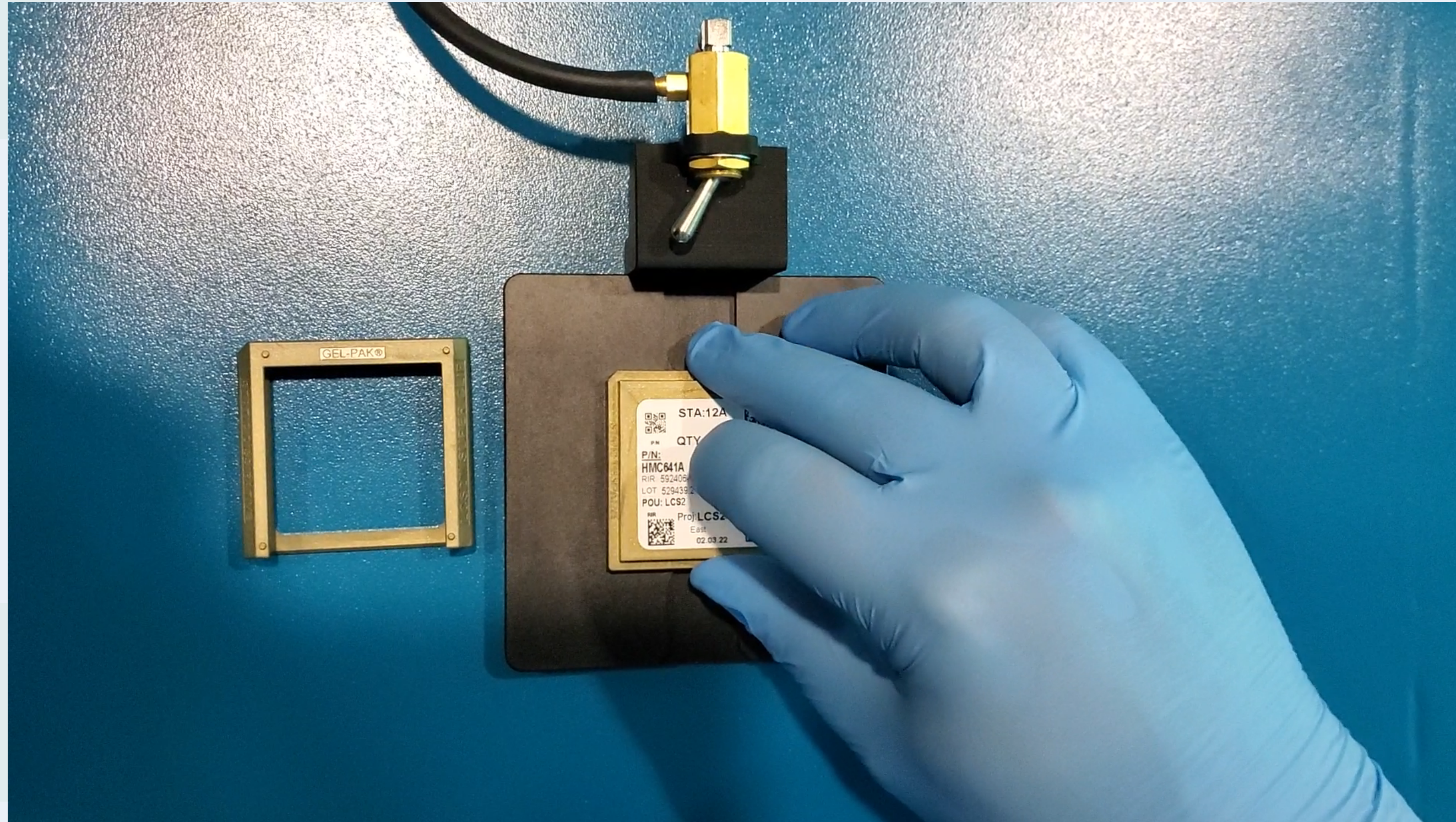
5. Once tray bottom is secured by vacuum, rotate the lid left then right slightly to free any components that could be stuck to the lid, maintaining gentle pressure on the lid.

6. Gently remove lid from tray.

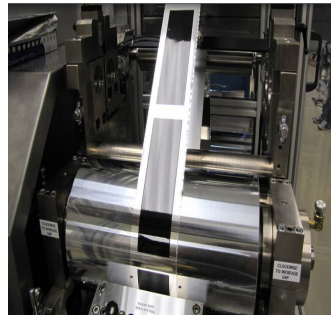


ROTATE LID TO FREE COMPONENTS VIDEO

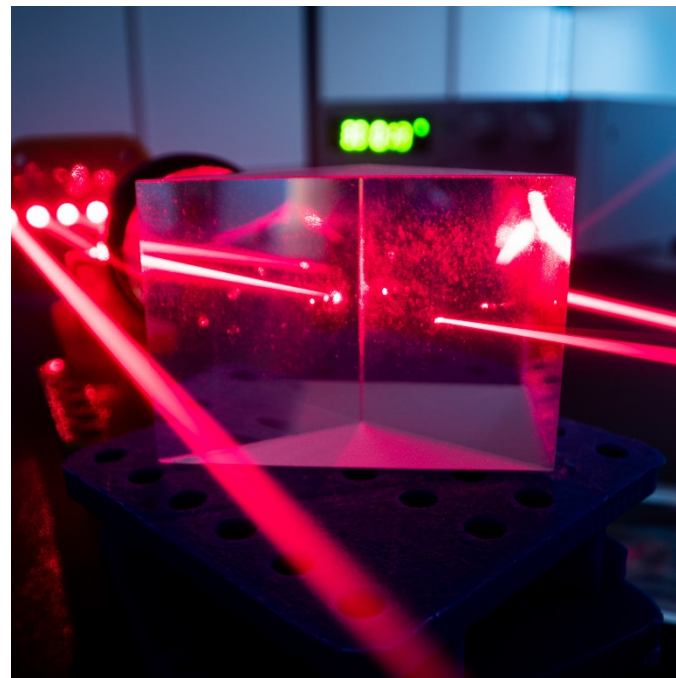
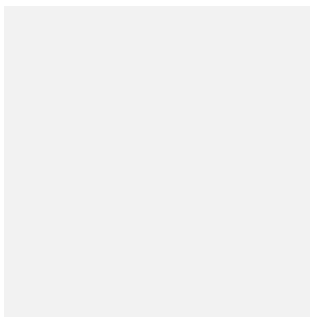
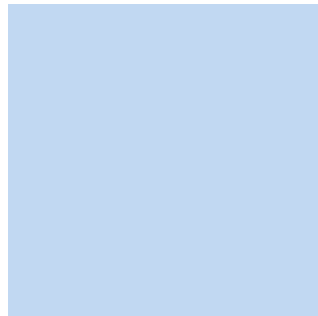
Gel-Pak



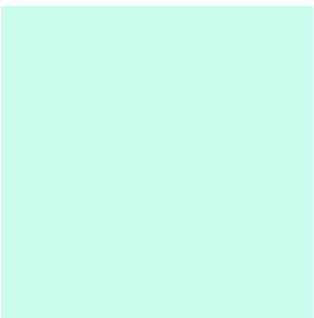
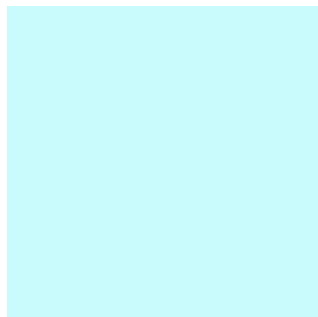
CLICK ON THE IMAGE TO SEE DEMONSTRATION VIDEO



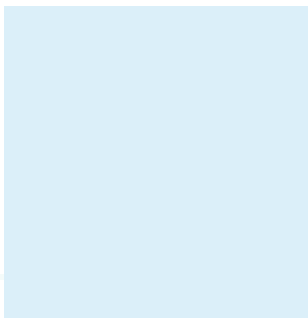
Unique polymers,
adhesives and
manufacturing processes



Specialty inks
and coatings



Superior protection
during shipping and
handling



DELPHON

MERGING INNOVATIVE TECHNOLOGIES

